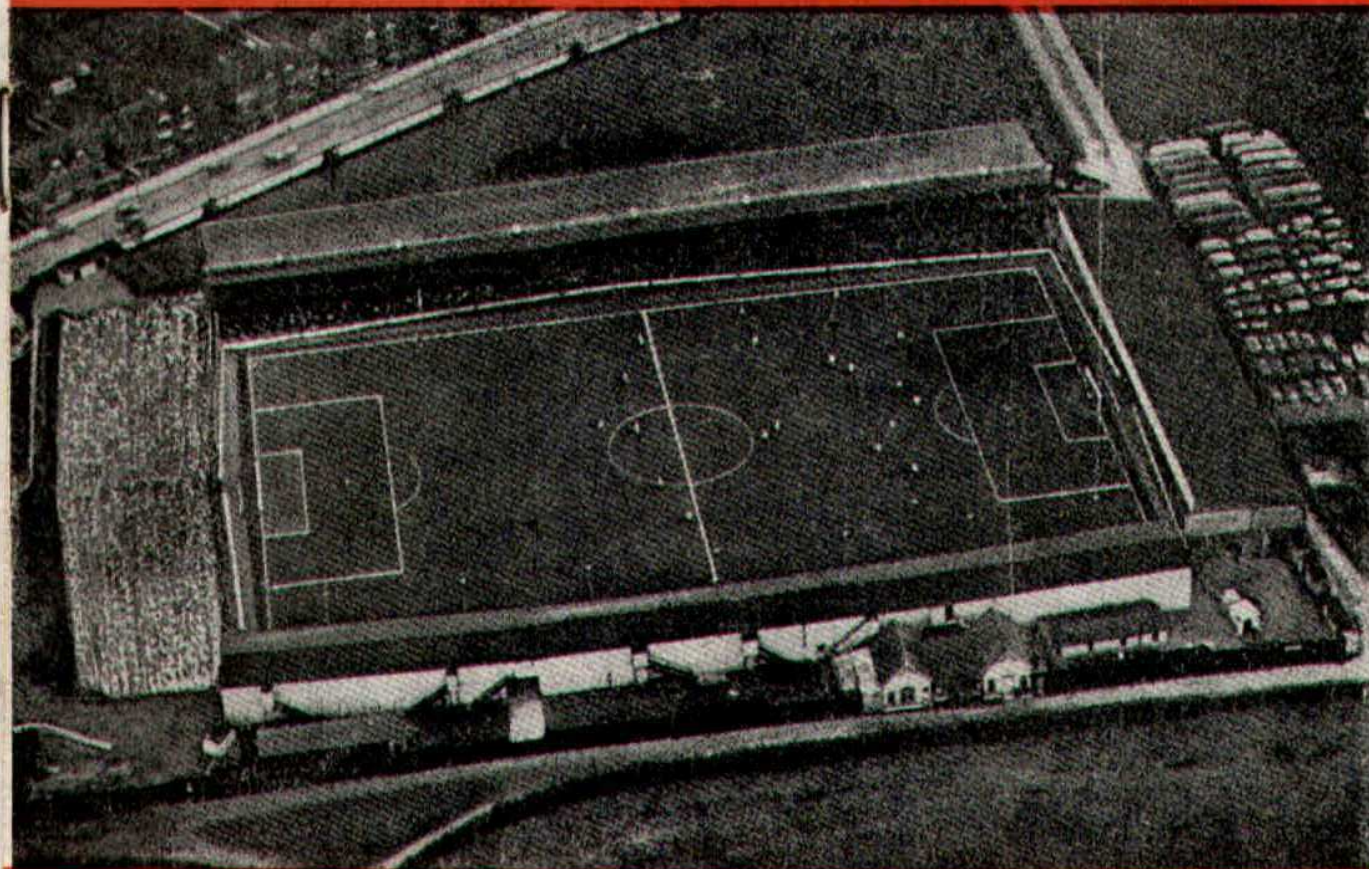




SWINDON TOWN FOOTBALL CLUB



SATURDAY, SEPTEMBER 30th, 1961

DIVISION III

SWINDON T. v. LINCOLN C.

Kick-off 3 p.m.

Official Programme **4d.**

**SOUTHERN LAUNDRY
CO. LTD.**

Launderers and Dry Cleaners



TELEPHONE 4161

STATION RD., SWINDON

GO MODERN — GO ELECTRIC
for

TELEVISION, RADIO AND
DOMESTIC APPLIANCES

D. ROBSON

22 HAVELOCK STREET

6602

Swindon

6602

Make your Goal the

EAGLE HOTEL

(Prop.: Tom Hamilton)

WORTHINGTON :: GUINNESS

DEVENISH BEERS :: BASS

REGENT ST., SWINDON

LITTLE & CO. LTD.

The Name Linked with Service
and Value

*The Popular Ladies' and Men's
Complete Outfitters*



31-32 FLEET ST., SWINDON

Telephone 2831

NEXT MATCH . . .

DIVISION III

SWINDON TN. v. GRIMSBY TN.

TUESDAY NEXT, OCTOBER 3rd, 1961

Kick-off 7.30 p.m.

Dr. BARNADO'S HOMES

Take care of 7,500 needy children and
still depend on public support

Send your donation to—

**Barnardo House, Stepney
Causeway, London, E.1.**

Donated by: Mrs. S. Mutch, 60
Cricklade Road, Swindon

LEESE, ING & Co. Ltd.

Incorporating BARKER & CO.

*Mineral Water and
Squash Manufacturers*



LANDSOWN RD., SWINDON

Telephone 2744/2320

HULFORD MOTORS Ltd.

SELF DRIVE HIRE

Fleet of 1961 Fords
Populares - Anglias - Consuls

SHRIVENHAM ROAD

(200 yards from Football Ground)

Phone 4934

LARGE CAR PARK AVAILABLE

For Quality
FLOWERS, FRUIT & VEGETABLES
Also FROZEN FOODS

**CLARKE'S
of Old Swindon**

Proprietors: A. G. G. & J. A. W. HUNT

64 DEVIZES ROAD - SWINDON

'Phone: 2337

ORDERS DELIVERED

SWINDON TOWN FOOTBALL COMPANY LIMITED

Registered Office: COUNTY GROUND, SWINDON

Directors:

Mr. W. J. CASTLE (Chairman)

Mr. H. E. LANE (Vice-Chairman)

Mr. B. T. HAMILTON (Hon. Treasurer)

Messrs. C. CHANDLER, J.P., J. DAVIES,

R. FRICKER, C. J. GREEN, F. PLYER, H. WILLIAMS and K. H. WILMER.

Manager: B. J. HEAD.

Secretary: R. A. MORSE.

Vol. 12

SATURDAY, SEPTEMBER 30th, 1961

No. 7

Club Notes

These notes are being written before the game at Barnsley. What an achievement if we could gain our third successive win! We fear it is a lot to expect. No doubt the two wins have done a great deal of good to our lads, but they could easily suffer a reaction after the gruelling game on Monday, and the long journey to Barnsley starting at 9 a.m. on Wednesday.

The League Cup match against Birmingham was thoroughly enjoyed by an excellent crowd of just over thirteen thousand people. It was a grand game in every respect, despite the two injuries. We are sorry indeed to learn that England centre-half Trevor Smith may be out of the team for some time with a strained muscle. The return of M. Summerbee should not be long delayed.

We thought the Birmingham team played in a very sporting manner. Many spectators thought their style rather robust, but Birmingham has been known as a strong-tackling side, fearless and determined. That is the way in which it plays. Although beaten by a lesser side, the City players

showed no resentment, and in the latter stages of the game fought desperately to retrieve the position. They certainly lacked anything in the form of gamesmanship, and their sporting attitude in often fetching the ball for their opponents was quickly applauded by the home supporters. It was refreshing indeed to see such actions, and the absence of the kicking away of the ball after the whistle had blown.

The officials were a grand group of men. They were full of praise for our lads, their style of play, and the enthusiasm and sportsmanship of Swindon supporters. One director enjoyed the evening so much (despite the defeat) that he came again the following evening with the Reserves. A warm welcome awaits any visitors from Swindon to Birmingham.

The "Jackpot" competition increased again, with the first prize over £35 in value.

Spectators at the County Ground on Saturday, 23rd September, witnessed an excellent game — Hellenic League, Swindon v. Witney Town. Our team (except

Continued on page 4

THE WALCOT CHEMIST

WIDE RANGE OF COSMETICS, PERFUMES,
BABY NEEDS AND PHOTOGRAPHIC GOODS

10 SUSSEX SQUARE - WALCOT
TEL. 6680

M. J. REYNOLDS

Grocer

152/154 CRICKLADE ROAD
5479 SWINDON 5479

COOKED HAM OUR SPECIALITY

WATSON'S CENTRAL NEWSAGENCY

LTD.

Swindon's Leading Wholesaler

1 WELLINGTON STREET, SWINDON
Tel. 2049

L. WOLLEN

OFF LICENCE

WINES & SPIRITS

Arkell's Ales and Stout

373 Cricklade Rd., Swindon
Deliveries Daily Phone 3508

CLUB NOTES—continued

for A. Darcy) was composed of lads all under 18 years of age. It was, in fact, the potential team for the Youth Cup, and it has played together for several games.

After ten minutes Swindon was two goals down, but by good football, our lads led at the interval by four goals to two. In the second half we scored two more excellently-worked goals. In spite of the score, Witney played excellent fast open football. We commend these games to our supporters.

Swindon Town F.C. is going to have a very busy time during the next fortnight. After this afternoon's game, we play Grimsby home on Tuesday, then on Wednesday travel north to meet Preston in the League Cup on Thursday. Back to Swindon on Friday, and off to Brentford for a vital game on Saturday, 7th October. The following Tuesday, 10th October, away to Grimsby. Friday, 13th October, home to Reading, and Tuesday, 17th October, home to Queen's Park Rangers. Should we draw at Preston, another home game must be arranged.

FOR ALL YOUR ANGLING NEEDS
CONSULT

FRANK WOODWARD

Swindon's Fishing Tackle Specialist

25 HAVELOCK ST., SWINDON
PHONE 3879

WE ARE SPECIALISTS IN —
OUTSIDE CATERING AND LICENSED BARS
FOR WEDDINGS, FETES, SPORTS DAYS, etc.

THE MASONS ARMS HOTEL

31 HIGH STREET - SWINDON 3522

H. E. LANE

(REGENT STREET) LTD.

The Pork Sausage Specialists

117 Victoria Road, Swindon
Telephone: 2336

COMLEY'S

Modern Music Centre

26 HAVELOCK ST., SWINDON

RECORDS - MUSIC - INSTRUMENTS

Top Twenty "Pops" always in stock
and wide selection of Jazz and Classics

PERSONAL SUPERVISION Phone 3874

FIXTURES AND RESULTS TO DATE

DIVISION III

1961

Aug. 19	Portsmouth	H	1-3
21	Coventry City	A	1-2
26	Crystal Palace	A	1-3
29	Coventry City	H	3-3
Sept. 2	Bournemouth	H	1-1
4	Queen's Park R.	A	1-6
9	Watford	A	0-2
16	Hull City	H	1-1
19	Barnsley	H	1-1
23	Northampton T.	A	2-1
27	Barnsley	A	2-6
30	Lincoln City	H	
Oct. 3	Grimsby Town	H	
7	Brentford	A	
10	Grimsby Town	A	
13	Reading	H	
17	Queen's Park R.	H	
21	Bristol City	A	
28	Bradford	H	
Nov. 4 (1)			
11	Shrewsbury Tn.	H	
18	Peterborough U.	A	
25 (2)			
Dec. 2	Newport County	A	
9	Southend U.	H	
16	Portsmouth	A	
23	Crystal Palace	H	
26	Halifax Town	A	
30	Halifax Town	H	

1962

Jan. 6 (3)	Notts County	A	
13	Bournemouth	A	
20	Watford	H	
27 (4)	Port Vale	H	
Feb. 3	Hull City	A	
10	Northampton T.	H	
17 (5)	Lincoln City	A	
24	Brentford	H	
Mar. 2	Reading	A	
10 (6)	Bristol City	H	
17	Bradford	A	
24	Notts County	H	
31 (S.F.)	Shrewsbury	A	
Apr. 7	Peterborough U.	H	
14	Port Vale	A	
20	Torquay Utd.	H	
21	Newport County	H	
23	Torquay Utd.	A	
28	Southend Utd.	A	
May 5 (Final)			

FOOTBALL COMBINATION

1961

Aug. 22	Leyton Orient	H	0-0
Sept. 6	Southend Utd.	A	1-3
13	Portsmouth	A	1-7
20	Bournemouth	A	0-3
26	Birmingham	H	1-1
Oct. 4	Aldershot	A	
10	Watford	H	
Nov. 1	Millwall	A	
7	Fulham	H	
14	Southampton	H	
22	Coventry City	A	
29	Reading	A	
Dec. 5	Brighton	H	
12	Brentford	A	
19	Charlton	H	

1962

Jan. 3	Chelsea	A	
9	Chelsea	H	
17	Leyton Orient	A	
23	Portsmouth	H	
31	Birmingham City	A	
Feb. 6	Bournemouth	H	
13	Watford	A	
20	Aldershot	H	
26	Queen's Park R.	A	
Mar. 6	Millwall	H	
14	Fulham	A	
20	Southend Utd.	H	
28	Southampton	A	
Apr. 3	Coventry City	H	
10	Reading	H	
17	Brighton	A	
23	Brentford	H	
May 2	Charlton	A	
To be arranged	Q.P.R.	H	

Our Visitors

LINCOLN CITY

Details of the players from whom the team will be selected are as follows:-

Bill Heath (Goalkeeper)

Born at Bournemouth, and was with his home club seven seasons before joining Lincoln City in November, 1958. Particularly commanding in the air and has improved tremendously since moving to Sincil Bank. Made 28 appearances in the first team last season. Ht. 6ft. Wt. 12st. 13lb.

Ron Allen (Right Back)

Transferred from Birmingham City in July, 1958. A defender with great powers of recovery. Previously with Birmingham City five seasons. Played 20 first team games during season 1960-61. Ht. 5ft. 9in. Wt. 10st. 12 lb.

Russell Green (Full Back)

A part-time player, born at Donnington, Lincolnshire. Signed from local football in July, 1952. Before commencing his National Service was a blacksmith's apprentice, and is extremely strong and fit. Made seven first team appearances last season. Ht. 5ft. 10in. Wt. 11st. 12lb.

Jeff Smith (Left Back)

Born at Warren (Sheffield). First signed for Sheffield United in 1954, and was with the United for five seasons. Transferred to Lincoln City in February, 1958. Has developed at Sincil Bank into a sound defender, and made 35 first team appearances last season. Ht. 5ft. 10in. Wt. 11st. 6lb.

Fred Middleton (Right Half)

Another player from the north-east, this time West Hartlepool. Skipper Middleton has now completed over 7 years' service with

the Imps. Signed from Newcastle United as an inside forward, but has proved himself a fine attacking wing half. He has missed very few games since joining the Imps and then only through injuries. Made 40 first team appearances last season. Ht. 5ft. 9in. Wt. 11st. 4lb.

Brian Heward (Centre Half)

A local-born player, who was previously with Scunthorpe Utd. Transferred to Lincoln City during the close season. Ht. 5ft. 9in. Wt. 11st.

Bob Jackson (Left Half)

Made a name as a most promising player while in the services of Oldham Athletic, his home-town club. Transferred to Lincoln City in March, 1955. Normally a full back, Jackson once again demonstrated his versatility by turning out in the half back line last season. Made 41 first team appearances during season 1960-61. Ht. 5ft. 10in. Wt. 12st. 2lb.

Ron Harbertson (Centre Forward)

A native of Bedlington, Harbertson is in his second spell with Lincoln City. Previously with Bradford City, Grimsby Town, Darlington and Wrexham. A close-season signing. Ht. 5ft. 10in. Wt. 11st. 9lb.

Roy Linnecor (Inside Forward)

Born in Birmingham, Linnecor was an amateur on Birmingham City's books for a little over a year before signing professional forms for the Midland club in March, 1952. Transferred to Lincoln City in April, 1957. Made 35 first team appearances last season. Ht. 5ft. 7in. Wt. 10st. 6lb.

Ray Barnard (Full Back)

Transferred from Middlesbrough to Lincoln City in June, 1960. A local discovery who was de-

C. Dunn & Son

BUILDERS & DECORATORS

Alterations, Renovations, Conversions
Plumbers and Sanitary Engineers

503 CRICKLADE ROAD Tel. 2522

FOR PAINTS OF GOOD QUALITY
H. S. HODGES & SONS
(SWINDON) LTD.

CRICKLADE ROAD - SWINDON
PHONE 2422

Dulux, Brolac, Friary, Valspar, Wallcharm, etc.

NOTTON'S CAFE

COUNTY ROAD

200 yards from Ground

RIGHT ON THE BALL

Harold Fleming

24 REGENT CIRCUS - SWINDON

Phone 22813



FOR ALL SPORTS EQUIPMENT

Also, Scout, Guide, Cub and Brownie Wear

OUR VISITORS—continued

veloped by the "Boro", and made his League debut with them in 1951. Played 27 first team games last season. Ht. 5ft. 10in. Wt. 12st. 5lb.

Peter Dunwell (Outside Left)

Born at Ecclesfield, and signed by Lincoln City as a part-time player in September, 1958. Dunwell has graduated through the "A" and Reserve Teams, and finally made his debut against Middlesbrough last year. Played 5 games in the first team last season. Ht. 5ft. 5in. Wt. 10st.

Ted Calland (Centre Forward)

Signed from Port Vale during the close season. Previously with Tor-

quay United and Exeter City. Ht. 5ft. 11in. Wt. 12st.

Mike Tracey (Forward)

Transferred to Lincoln City from Luton Town in June this year. Ht. 5ft. 10in. Wt. 11st. 9lb.

Bob Graves (Goalkeeper)

Engaged on amateur forms by the club in February, 1959, and signed part-time professional on 30th April, 1960. Made first team debut last season at the age of 17 years. Ht. 6ft. 1in. Wt. 11st. 6lb.

Neville Bannister (Outside Right)

Previously with Bolton Wanderers seven seasons. Transferred to Lincoln City in March this year. Is equally at home on either wing. Ht. 5ft. 6in. Wt. 10st.

GODDARD & Co.

Wholesale and Retail

WINE - SPIRIT - BEER
AND CIDER MERCHANTS

9 REGENT STREET, SWINDON

Telephone 2415

Also at

4 WINGATE PARADE, SWINDON

We are your **Main Distributors** for
VAUXHALL and **JAGUAR** cars
BEDFORD Vans and Trucks, etc.

Any make of Car or Truck
supplied - Used Vehicles a
specialised part of our
business.

SKURRAY'S
SWINDON

Telephone: 2266

H. HIBBERD LTD.

Plant Hire Contractors

TRACTORS and SCRAPERS
BULLDOZERS
DOTT SHOVELS
DIGGERS
ROAD ROLLERS

40 NEWPORT STREET, SWINDON

Telephone 6125

Swindon Bacon Curing Co. Ltd.

*Specialists in
Bacon, Pork & Cooked Ham*

50 FLEET STREET
SWINDON

Telephone: 2122

WARNES (Swindon) Ltd.

Electrical Contractors
Radio and Television

Contractors to:
SWINDON TOWN FOOTBALL CLUB

51/52 COMMERCIAL RD., SWINDON

'Phone 6346/7

160 COUNTY RD., SWINDON

'Phone 6346/7

9 SWINDON ST., HIGHWORTH

'Phone 379

7 CLIVE PARADE, SWINDON

'Phone 6346/7

DAY RETURN TICKETS

On Weekdays and Sundays (services permitting), available in each direction by any train the same day. From Swindon Junction to:-

	2nd Class
Bath Spa	7/6d.
Bristol (T.M.)	9/0d.
Weston-super-Mare	11/6d.

Other fares available. Ask for pamphlet B7/411, giving full information.

BRITISH RAILWAYS

Western Region

W. B. CARTER

Newsagent, Tobacconist and Confectioner
Large selection of Boxes of Chocolates
always in stock

CORONA, TIZER, DRINKS, etc.

Agents for Wall's Ice Cream

188/190 FERNDAL RD., SWINDON

Telephone: 3089

MILLS & MERI

SWINDON TOWN v. LINCOLN CITY

SWINDON TOWN

RIGHT WING

Colours: RED SHIRTS, W

Burton

Jones (2)

Morgan (4)

Owen (5)

Corbett (7) Hunt, E. (8) Smith (9)

Referee—

Mr. A. J. Sturgeon
(London)



Barrett (11) Harbertson (10) Punter (9)

Linnecor (6) Barnard (5)

Smith (3) Jack

Graves

LINCOLN CITY

LEFT WING

These teams are subject to

16-17 BRIDGE ST. SW

ENGLAND'S QUALITY
SERVICE

Your Car washed in under

THE INSTANT C

6/- ANY MAKE — 4

Local Stations:

MARLBOROUGH ROAD
SWINDON

QUEENS ROAD
READING

Make your goal . . .

McILROYS RESTAURANT

Top of the Catering League
COFFEE - LUNCHES - TEAS
Parties catered for.
Regent Street, Swindon. Tel. 5294

THE PLESSEY COMPANY Ltd.

After years of achievement have great expansion plans for the future.

**TECHNICAL STAFF
CLERICAL STAFF
MANUAL WORKERS**

are essential for this progress.

Interested persons please apply to the Personnel Department.

MERRICKS LTD.

LN CITY Kick-off 3 p.m.
NDON TOWN
SHIRTS, WHITE SHORTS LEFT WING
Burton

Trollope (3)
Dwen (5) Woodruff (6)
mith (9) Hunt, R. (10) Jackson (11)



Linesmen —

Red Flag —
Mr. K. B. Hale
(Bristol)

Yellow Flag —
Mr. W. J. Mardon
(Bristol)

Punter (9) Tracey (8) Bannister (7)
arnard (5) Heward (4)
Jackson (2)

Graves

COLN CITY

e subject to alteration

RIGHT WING

U
P
H
O
L
S
T
E
R
S
•
R
E
M
O
V
A
L
S

INSIST ON Garrard EQUIPMENT



For Superb Tape and Record Playing



Fitted by the World's leading manufacturers.

T. SWINDON

PHONE
5365

QUALITY CAR WASHING SERVICE

in under 5 minutes by

AT CAR WASH

E — 4 WASHES £1

l Stations:

ENS ROAD
EADING

QUEENS ROAD
BRISTOL

WILSONS (SWINDON) LTD.

BUILDERS OF
MODERN ATTRACTIVE HOUSES
AND BUNGALOWS

All enquiries to Head Offices

90 COMMERCIAL ROAD
SWINDON 6361-3

ONE QUALITY ONLY—THE BEST !
FRESH SUPPLIES DAILY

York Road Fisheries

SWINDON

WET, DRY or FRIED Tel.: 3680

Rent your T.V. - Washing Machines
Spin Dryers - Electrical Installations
from

D. V. HOLLAMBY LTD.

138 High St., Wootton Bassett, Wilts.
Telephone 295

ALL LEADING MAKES IN STOCK

DEMPSTER ENTERPRISES, offer a modern fleet of 4 and 6 seater self-drive hire cars, for your pleasure and convenience. For advance bookings apply:-

Dempster Enterprises
38 VICTORIA ROAD, SWINDON
Tel. 6460

Howard Autos, Swindon's Main Cotton Motor Cycle distributors always have a good selection of guaranteed used cars for you to choose from.

HOWARD AUTOS
134/5 MANCHESTER ROAD
Tel. 6603
and at 3 WELLINGTON STREET, SWINDON

HALF-TIME JACKPOT DRAW

TODAY'S WINNING NUMBERS WILL BE ANNOUNCED AT
HALF-TIME.

The following will assist you to record the numbers and prizes as announced.

1st PRIZE	No.	Amount £.....
2nd PRIZE	No.	Amount £.....
3rd PRIZE	No.	Amount £.....
4th PRIZE	No.	Amount £.....

Winning numbers will also be published in "Evening Advertiser"

'BAILEY'S'

2 Cheney Manor Road - Swindon

NEWSAGENT :: TOBACCONIST
CONFECTIONER

Personal Attention and Satisfaction
always assured.

MEET YOUR FRIENDS FOR AN
ENJOYABLE EVENING AT

THE KINGSDOWN INN

(Host A. W. Vann)

FULLY LICENSED - ARKELL'S BEERS
SNACKS, Etc.

Stratton St. Margaret. Tel.: 3283

A. WHEELER & SON

330 CRICKLADE ROAD

PHONE 2095

FOR QUALITY COALS
AND PROMPT SERVICE

Lowest Terms for Self Drive Cars
* * *
Free Deliveries - Glasses loaned free
for your Wines, Spirits and Beers
115 CRICKLADE ROAD
"The Corner Off Licence"
Ring 4711 or call at

Supporters' Club Notes

These notes are being written prior to the match at Barnsley on Wednesday, but since we last inflicted ourselves on Supporters, a gratifying change has taken place in the fortunes of the team.

The victories over Northampton and Birmingham City came as a relief to all, and we trust that the team has now "turned the corner."

We were interested to read that R. Agar, of Walthamstow, who assisted the Town a few years ago, has been selected to represent the England Amateur International Team.

He appeared mostly in the Combination Side, and we remember him as one of those enthusiastic players who always obviously enjoyed every game in which he played. Players of this type always add to the enjoyment of the spectators.

Following our recent comments on the generous assistance accorded to our efforts by country supporters, it was good to note that, last Saturday, a large proportion of the Competition prizes went to friends living outside the Borough.

There were thirty-nine competitors sharing these prizes.

In this case, in spite of our weekly hopes, charity has not be-

gun at home, but, bowing to the inevitable, we are pleased to know that some of our country friends are reaping the reward of continued support.

However, the primary object of our existence is to support the Town F.C. and this is best done in terms of cash.

We would, therefore, repeat our previous remarks concerning our competition. 12,000 people are paying one shilling weekly, thus producing £600.

Prizes absorb £280, printing and postages £60, leaving a very useful £260 for the Club per week.

The point which we cannot emphasise too strongly is that if we can obtain our additional permitted quota of 3,000 people per week, the sum of £150 thus produced would represent, almost entirely, additional profit, as the outgoings would be increased by only a negligible amount.

Will you, therefore, please come along, if you have not already done so and become a member of the Club and Competition?

Supporters under the age of 16 are not permitted to participate in the Competition, but they can, of course, join the Club, for the sum of sixpence. Badges are available at a small extra charge.

Holders of lucky programmes on 25th September were: 202—Mr. F. Stone, 77 Caulfield Road, Swindon. 3171—Mr. Roper, 38 William Street, Swindon.

KEY OF THE BOARD

Half-time scores will be given in two sections: First Section indicated by | 1 |. Second Section indicated by | 2 |.

FIRST SECTION

A—Birmingham v. Bolton W.
B—Blackburn v. Sheffield Utd.
C—Blackpool v. Chelsea
D—Everton v. Arsenal
E—Fulham v. Burnley
F—Manchester Utd. v. Wolverhampton W.
G—Sheffield W. v. Ipswich
H—Tottenham H. v. Aston Villa
I—West Brom. A. v. Manchester C.
J—West Ham v. Leicester C.
K—Bury v. Rotherham
L—Charlton v. Liverpool
M—Derby v. Huddersfield
N—Leeds Utd. v. Preston N.E.
O—Middlesbrough v. Southampton
P—Newcastle Utd. v. Luton Tn.
Q—Norwich C. v. Bristol R.
R—Walsall v. Swansea
S—Crystal Palace v. Southend
T—Halifax Tn. v. Northampton

SECOND SECTION

A—Notts County v. Newport County
B—Peterborough v. Brentford
C—Portsmouth v. Bournemouth
D—Torquay Utd. v. Bradford
E—Aldershot v. Darlington
F—Bradford C. v. Hartlepoons
G—Carlisle v. Southport
H—Chester v. Wrexham
I—Crewe v. Workington
J—Exeter C. v. Doncaster
K—Mansfield Town v. Gillingham
L—Oldham v. Millwall
M—Rochdale v. York City

The Rendezvous of all Sportsmen . . .

THE CROWN INN

(Host: Frank Plyer)

Arkell's Best Ales : Fully Licensed
Snacks, etc.

STRATTON ST. MARGARET Tel. 2339

SUPPORT YOUR HOME

CIVIL DEFENCE

Plays a vital part in saving lives

Particulars:

CIVIC OFFICES - SWINDON

WIN OR LOSE !

THE FOOD IN THE

China
Restaurant
IS BEST

107 COMMERCIAL ROAD

SWINDON 6888

Open Daily 12 noon - 11.30 p.m.

For all Chinese and English Dishes

Have you purchased your ticket for the

HALF-TIME JACKPOT DRAW

TICKETS 6d. EACH on sale on the Ground
FOUR PRIZES

Result of Draw on Monday, September 25th

1st Prize—£35-12-0 Ticket No. 4748

2nd Prize—£26-14-0 Ticket No. 1638

3rd Prize—£17-16-0 Ticket No. 6583

4th Prize—£8-18-0 Ticket No. 4045

COATE GARAGE



THE ALCOHOL FUEL

REPAIRS
SERVICING
TYRES

★

OVERHAULS
REBORING
WELDING

Props.: E. V. & W. H. Mattick

MARLBOROUGH ROAD, SWINDON

For something a little different, try

DON JONES

HIGH CLASS CONFECTIONER
AND TOBACCONIST

Always a good selection of
SUCHARDS' - TOBLER
TERRY'S

Quality Chocolates and Presentation
Boxes

112 COMMERCIAL ROAD

6012

SWINDON

6012

Typewriters from £10

FULLY GUARANTEED

**DOBELL SHEARMAN
& CO. LTD.**

26 HIGH ST. & 33 FARINGDON RD.,
SWINDON Telephone 4961

Only 800 yards to your Dream Car—

NEW ALPHA MOTOR Co.
(SWINDON) LTD.

QUEENS DRIVE, SWINDON

Tel. 5062/63

FOR TOP QUALITY USED CARS

Open 7 days per week from 7 a.m. to 10.30 p.m.
Servicing for all makes of cars

DIVISION III

	P.	W.	D.	L.	F.	A.	Pts
Portsmouth	11	7	4	0	19	9	18
Bournemouth	11	6	5	0	23	7	17
Reading	11	8	0	3	27	18	16
Grimsby Town	11	7	1	3	20	12	15
Peterborough Utd.	11	7	1	3	27	27	15
Hull City	11	5	3	3	18	13	13
Port Vale	11	5	3	3	17	14	13
Queen's Park Rangers	10	5	2	3	29	18	12
Shrewsbury Town	11	4	4	3	20	17	12
Halifax Town	10	5	2	3	16	15	12
Crystal Palace	11	4	3	4	18	15	11
Southend United	11	4	3	4	13	12	11
Coventry City	11	4	3	4	18	19	11
Bradford	10	5	0	5	22	20	10
Watford	11	3	4	4	19	20	10
Lincoln City	11	3	4	4	16	19	10
Bristol City	11	4	1	6	11	14	9
Notts County	11	3	3	5	17	20	9
Northampton Tn.	11	2	3	6	12	16	7
Newport County	10	2	2	6	13	19	6
Torquay Utd.	11	3	0	8	19	26	6
Barnsley	11	2	2	7	19	31	6
SWINDON TOWN	11	1	4	6	14	29	6
Brentford	11	2	1	8	9	21	5

Chappell's Funeral Service

(Fun. Dir.: A. A. Winchcombe)

**196 COUNTY ROAD
SWINDON**

24 hour Service Tel. 6073

*Your local "TEAM" for RENAULT
Sales and Service*

**CORONATION
CAR SALES**

67/68 VICTORIA ROAD

Telephone 4964

**SEA VIEW HOLIDAY
CAMP**

YOUR HOST — Mr. BENNETT

WYKE REGIS - WEYMOUTH
Dorset

"COAL!"
"COAL!"
"COAL!"

J. WILMER

ST. MARGARET'S ROAD, SWINDON

Telephone 2535

MEET YOUR FRIENDS AT THE

Southbrook Inn

(Hosts: Mr. and Mrs. Jack Scutts)

FULLY LICENSED
CLINCH BEERS, ETC.

SOUTHBROOK STREET, SWINDON
Tel.: 5837

STOP!

LOOK!

NU-HOMES

For all Household Fitments

Paints - Emulsions - Wallpapers
Kitchen Units and Bathroom Suites,
etc.

176a Manchester Road
TELEPHONE 2178

FORTHCOMING MATCH . . .

WESSEX YOUTH LEAGUE

SWINDON TN. v. BRISTOL CITY

FRIDAY NEXT, OCTOBER 6th, 1961

Kick-off 7.30 p.m.

**BRITANNIA
MOTORS**

Proprietors A. GODWIN

205-206 RODBOURNE ROAD
SWINDON PHONE 5303

- **TYRES**
NEW AND REMOULD
CASH OR EASY PAYMENTS
- **ACCESSORIES**
- **QUICK SERVICE AND REPAIRS**
AT SWINDON'S MOST MODERN
LUBRICATION BAY AND
WORKSHOP

*For High Class
Central Heating, Plumbing
Painting and Decorating
Electrical Installations
and Repairs*

NORTH WILTS

**Sanitary & Heating
Co. Ltd.**

NEWPORT ST., SWINDON

'Phone: 5373/4

Always at your service

L. BIBBY

For all Types, Rags, Iron and Metal,
etc. Spot Cash Paid. Please Telephone
2101 and our van will call.

THE PADDOCK, ERMIN STREET
STRATTON ST. MARGARET

Walcot Greengrocer

G. E. STAMMERS

at

**1 SUSSEX SQUARE
SWINDON**

SWINDON **2526**

*CAN ALSO BE YOUR LUCKY NUMBER !!!
if you ring*

HOLMES & LUCAS

14A REGENT STREET :: SWINDON

for all your

TELEVISION, RADIO AND ELECTRICAL REQUIREMENTS

LUCKY PROGRAMME

Please retain your programme. An announcement will be made at half-time of two numbers and the holders will be given a stand seat at the next Division III game. The persons who purchased the programmes bearing the winning numbers should call at the office after the game and claim their seats.

156

FRIED FISH AND CHIPS

Always Fresh - Always Hot

**WALCOT FISHERIES
Sussex Square**

Wet fish and frozen foods all refrigerated display.

Telephone Swindon 2731

6 REGENT CIRCUS (NEAR G.P.O.)

Main Booking Agents for Millers Coaches
Agents for Wessex School of Motoring
Newsagents & Tobacconists & Confectioners
A. J. D. WOODHOUSE & A. SMITH

HATTON'S NEWSAGENCY

For Insurance or Hire Purchase
CARS - CARAVANS - MOTOR CYCLES, etc.
Consult

D. & H. HENTY LTD.

54 COMMERCIAL RD., SWINDON
SWINDON 5258

PANKHURST

**The Palace, Gorse Hill,
Swindon**

MOTOR CYCLE - SCOOTER AND
THREE-WHEELER SPECIALISTS

Open Mon. to Sat. 9 a.m. - 8 p.m. Phone 5466

MORGAN'S

IRONMONGERS

C.A.S.M.S. (Swindon) Ltd.

2 SUSSEX SQUARE, WALCOT, SWINDON
also at 163 RODBOURNE ROAD Tel. 2516

Paraffin services to all areas town and country
Everything for the home
Precision Tools for Engineering Trade,
Tools for all trades

Maylott Studios

For GROUP & SPORT Photographs
OFFICIAL PHOTOGRAPHER TO
SWINDON TOWN FOOTBALL CLUB

31 FARINGDON RD. Tel. 2792